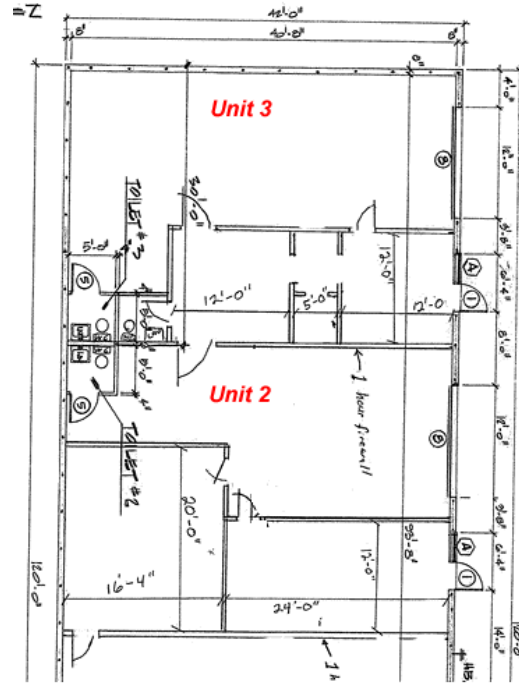


3056 Palm Ave

Fort Myers, Florida 33916

1,260 SF adjacent A/C flex space
2,520 SF total or lease individually



FOR LEASE

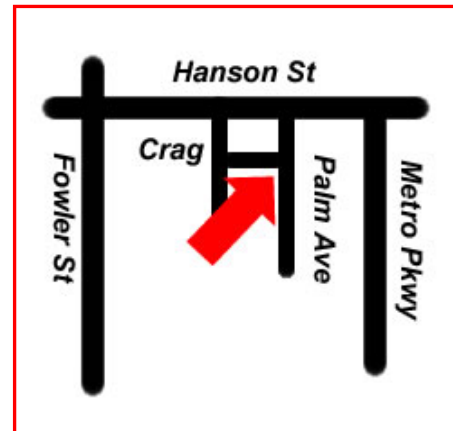
Two – 1,260 SF (adjoining) units
Lease either or both at below market rates

- Units are newly renovated
- Primarily A/C space
- Overhead doors
- Glass entry plus personnel door

This excellent location has easy access to US 41, McGregor, Summerlin, or Cape Coral.

STRAP # 25-44-24-P2-0170B.0170

\$7.00 / SF GROSS =
\$735 / Mo. (ea.) + sales tax



The Miller Alliance, RE/MAX Realty Group
7910 Summerlin Lakes Dr. Fort Myers, Florida 33907

(239)689.4900

Complete details available at
WWW.MILLERALLIANCE.COM

Although obtained from sources deemed reliable, this information is not warranted and should be verified by any interested party. All dimensions and amounts are approximate. Subject to prior sale, lease, withdrawal and price change without notice.