

ENGINEERS, LAND SURVEYORS & PLANNERS  
 LICENSE CERTIFICATION NUMBER LB 6090  
 101 E CYPRESS PARKWAY - SUITE 101  
 MYERS, FLORIDA 33966  
 (239) 933-5490

**CURVE TABLE**

CURVE	RADIUS	DELTA	ARC	CHORD	CHORD BEARING
C1	41.42'	53°14'05"	38.49'	37.12'	N 34°49'57" W
C2	60.00'	89°53'54"	84.14'	84.78'	N 44°09'28" E

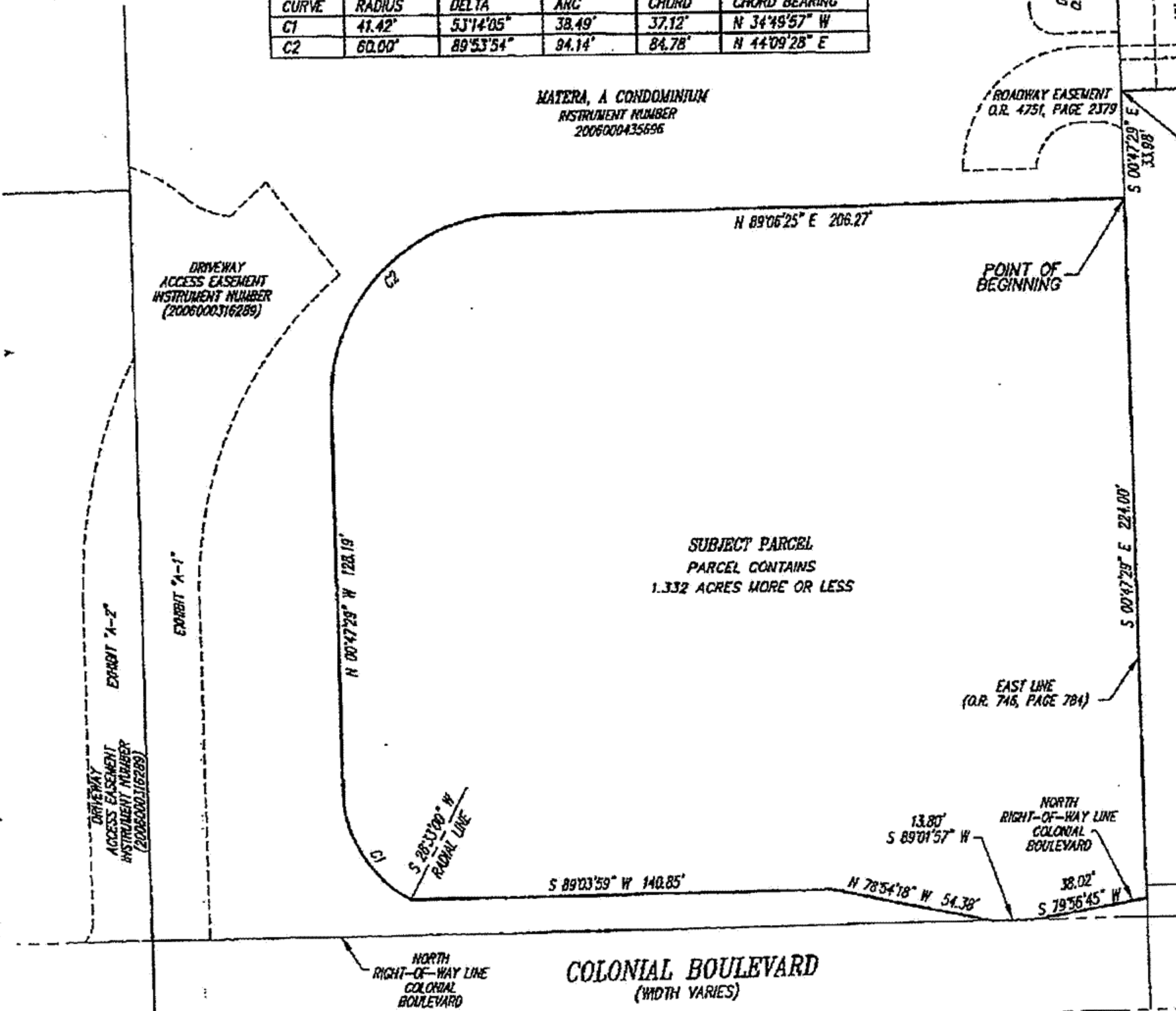
MATERA, A CONDOMINIUM  
 INSTRUMENT NUMBER  
 2006000435696

**SKETCH OF DESCR**

OF  
 A TRACT OR PARCEL OF LAND LY  
 SECTION 35, TOWNSHIP 44 SOUTH, RA  
 LEE COUNTY, FLORIDA

LOT 1  
 SOMMERSET COMMERCIAL PARK  
 (P.B. 79, PAGES 13-14)

From: 305.235.5117 Page: 5/5 Date: 7/2/2007 1:09:06 PM



SUBJECT PARCEL  
 PARCEL CONTAINS  
 1.332 ACRES MORE OR LESS

**LEGEND:**

- PG. INDICATES PAGE
- P.B. INDICATES PLAT BOOK
- LB INDICATES LICENSED BUS
- D.E. INDICATES DRAINAGE EA.
- C1 INDICATES NO. 1 OF CUR
- O.R. INDICATES OFFICIAL RECI
- P.U.E. INDICATES PUBLIC UTILIT

**NOTES:**

- 1.) SUBJECT TO EASEMENTS, RESTRICTIONS, RES AND RIGHTS-OF-WAY OF RECORD.
- 2.) BEARINGS ARE BASED ON THE CENTERLINE OF COLONIAL BOULEVARD AS BEARING S 89°01'57" W.

SEE SHEET 1 OF 2 FOR  
 METES AND BOUNDS DE.

THIS SKETCH OF DE  
 IS NOT A BOUNDAR

*Richard M. Ritz*  
 RICHARD M. RITZ  
 REGISTERED LAND SURVEYOR  
 FLORIDA CERTIFICATION NO.  
 - DATE SIGNED: 06-22-07  
 - THIS SKETCH OF DESCRIPTION IS  
 WITHOUT THE SIGNATURE AND THE  
 SEAL OF A FLORIDA LICENSED SU.

This fax was received by GFI FAXmaker fax server. For more information, visit: http://www.gfi.com