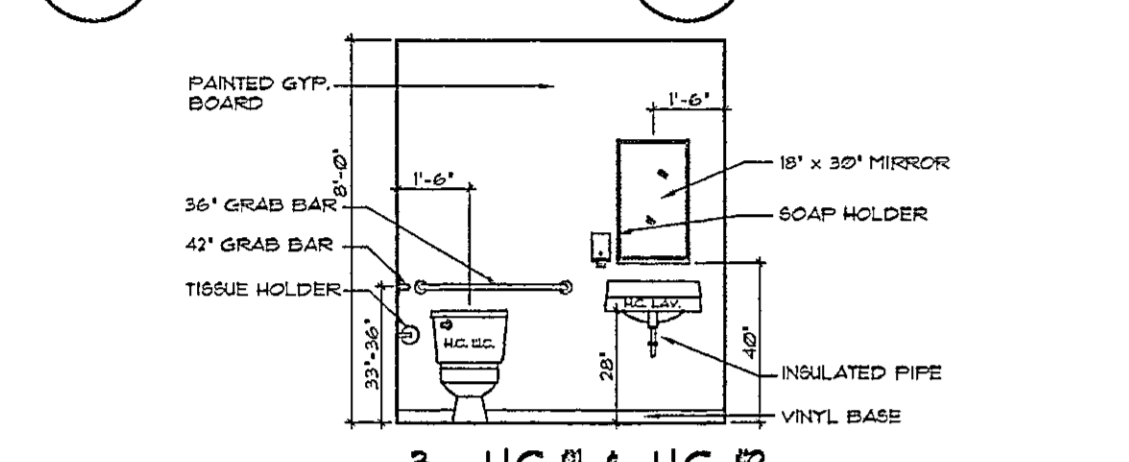


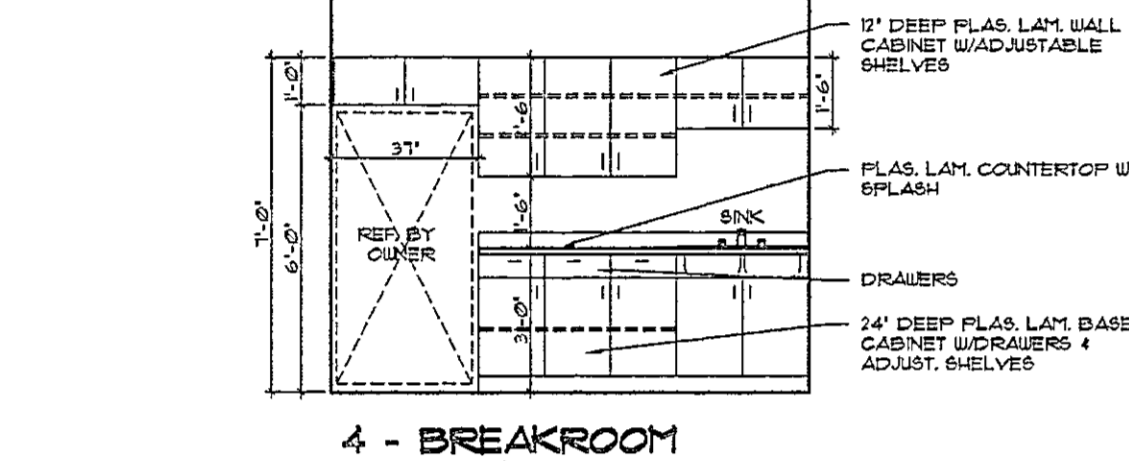
**GENERAL NOTES TO GENERAL CONTRACTOR:**

- PROVIDE DESIGN DOCUMENTATION FOR THE ROOFING SYSTEM PROPOSED AND COMPLY WITH THE FLORIDA BUILDING CODE 2001.
- PROVIDE TESTING DOCUMENTATION FOR THE ROOFING SYSTEM PROPOSED COMPLYING WITH THE FLORIDA BUILDING CODE 2001.
- PROVIDE ARCHITECTURAL APPROVAL ON ALL DOOR SCHEDULES SUBMITTED FOR CONSTRUCTION PER CODE.
- PROVIDE PRE-ENGINEERED STEEL BUILDING PLANS SIGNED AND SEALED BY A FLORIDA REGISTERED ENGINEER OR PROVIDE A LETTER FROM THE MANUFACTURER WHICH IDENTIFIES THE BUILDING OTHER ADDRESS, CONTRACTOR, SIZE AND ALL STRUCTURAL LOADS, PLANS OR LETTER THAT INDICATE WIND SPEED DESIGN PER THE 2001 FLORIDA BUILDING CODE 2001 SECTION 6.1.1 LETTER B PROVIDED, IT MUST BE SIGNED AND SEALED.
- UNLESS OTHERWISE NOTED, THE GENERAL CONTRACTOR SHALL PROVIDE A WINDOW SCHEDULE SHOWING:
  - ALL OPENINGS IN THE BUILDING AND THE DESIGN WIND LOAD ON EACH.
  - ALL WINDOWS FOR EACH OPENING SHOWING THEIR TESTED DESIGN MEETING OR EXCEEDING THE OPENING REQUIREMENTS.
  - PROVIDE DESIGN DOCUMENTATION TO VERIFY WINDOWS WIND LOAD DESIGN TO INCLUDE METHOD OF ATTACHMENTS FOR EACH OPENING.
  - PROVIDE TESTING DOCUMENTATION TO VERIFY WINDOWS WIND LOAD DESIGN.
  - PROVIDE ARCHITECTURAL APPROVAL ON ALL DOCUMENTATION SUBMITTED.
  - ALL DOCUMENTATION MUST SPECIFIC FOR THE APPLICATION, DO NOT SUBMIT A BROCHURE CUT SHEET WITH GENERIC INFORMATION.
- EXTERIOR LOUVERS AND VENTS - THE GENERAL CONTRACTOR SHALL PROVIDE INFORMATION SHOWING:
  - ALL OPENINGS IN THE BUILDING AND THE DESIGN WIND LOAD ON EACH.
  - ALL LOUVERS FOR EACH OPENING SHOWING THEIR TESTED DESIGN MEETING OR EXCEEDING THE OPENING REQUIREMENTS.
  - PROVIDE DESIGN DOCUMENTATION TO VERIFY LOUVERS WIND LOAD DESIGN TO INCLUDE METHOD OF ATTACHMENTS FOR EACH OPENING.
  - PROVIDE TESTING DOCUMENTATION TO VERIFY LOUVER WIND LOAD DESIGN.
  - PROVIDE ARCHITECTURAL APPROVAL ON ALL DOCUMENTATION SUBMITTED.
  - ALL DOCUMENTATION MUST SPECIFIC FOR THE APPLICATION, DO NOT SUBMIT A BROCHURE CUT SHEET WITH GENERIC INFORMATION.
- EXTERIOR DOORS - THE GENERAL CONTRACTOR SHALL PROVIDE SCHEDULE SHOWING ALL OPENINGS IN THE BUILDING AND THE DESIGN WIND LOAD ON EACH.
  - ALL OPENINGS IN THE BUILDING AND THE DESIGN WIND LOADS AND WIND LOAD ON EACH.
  - ALL METHODS OF PROTECTION FOR EACH OPENING SHOWING THEIR TESTING DESIGN MEETING OR EXCEEDING THE OPENING REQUIREMENTS.
  - PROVIDE TESTING DOCUMENTATION TO VERIFY DESIGN.
  - PROVIDE ARCHITECTURAL APPROVAL ON ALL DOCUMENTATION SUBMITTED.
  - ALL DOCUMENTATION MUST SPECIFIC FOR THE APPLICATION, DO NOT SUBMIT A BROCHURE CUT SHEET WITH GENERIC INFORMATION.
- GARAGE DOORS - THE GENERAL CONTRACTOR SHALL PROVIDE A SCHEDULE SHOWING:
  - ALL OPENINGS IN THE BUILDING AND THE DESIGN WIND LOADS AND WIND LOAD ON EACH.
  - ALL METHODS OF PROTECTION FOR EACH OPENING SHOWING THEIR TESTING DESIGN MEETING OR EXCEEDING THE OPENING REQUIREMENTS.
  - PROVIDE TESTING DOCUMENTATION TO VERIFY DESIGN.
  - PROVIDE ARCHITECTURAL APPROVAL ON ALL DOCUMENTATION SUBMITTED.
  - ALL DOCUMENTATION MUST SPECIFIC FOR THE APPLICATION, DO NOT SUBMIT A BROCHURE CUT SHEET WITH GENERIC INFORMATION.

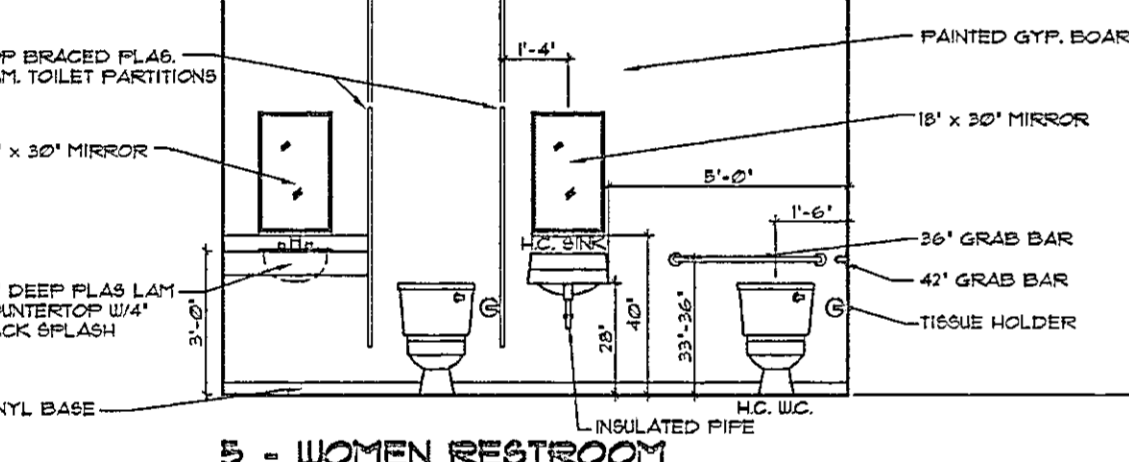
**1 - OFFICE PARTITION** SCALE: 1/4" = 1'-0"



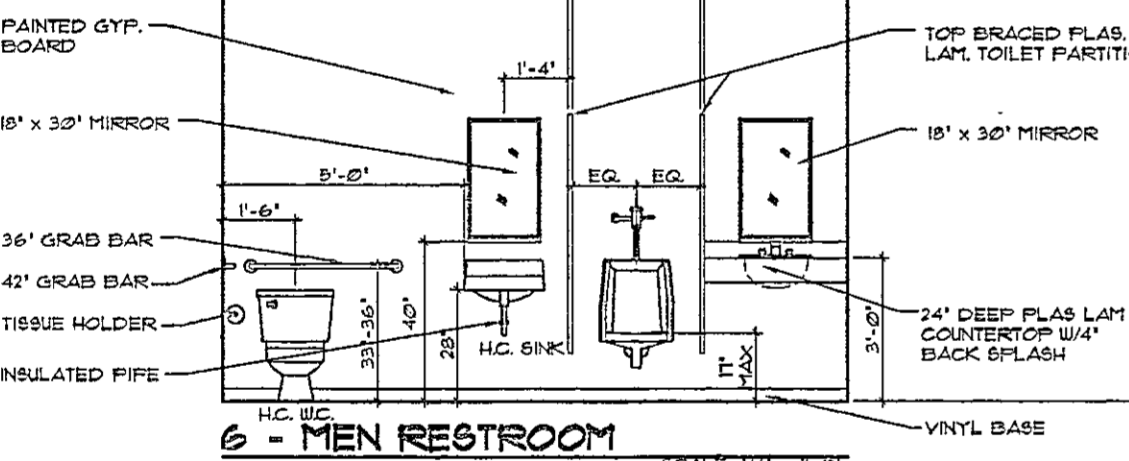
**2 - OFFICE PARTITION** SCALE: 1/4" = 1'-0"



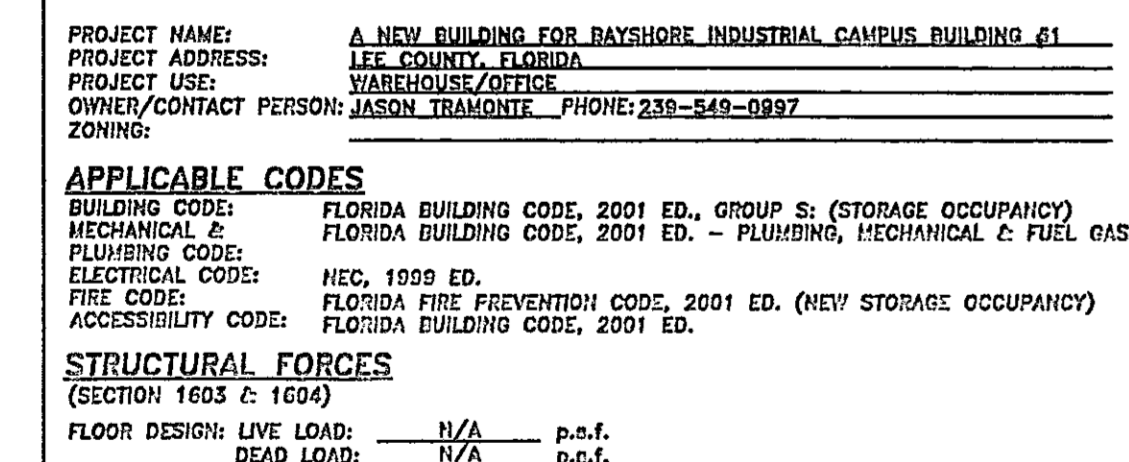
**3 - H.C. #1 & H.C. #2** SCALE: 1/4" = 1'-0"



**4 - BREAKROOM** SCALE: 1/4" = 1'-0"

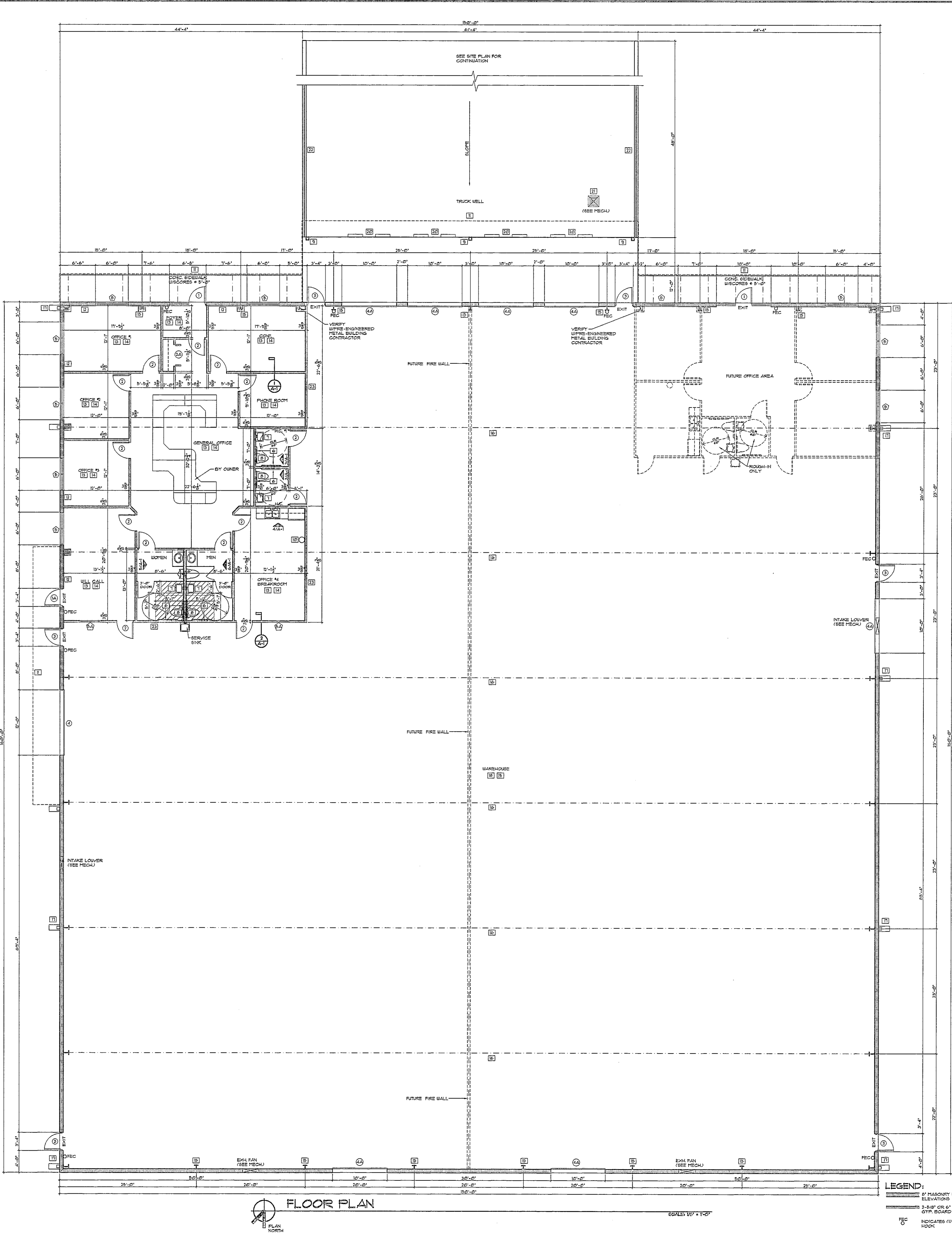


**5 - WOMEN RESTROOM** SCALE: 1/4" = 1'-0"



**6 - MEN RESTROOM** SCALE: 1/4" = 1'-0"

PROJECT DATA SUMMARY			
PROJECT NAME:	A NEW BUILDING FOR BAYSHORE INDUSTRIAL CAMPUS BUILDING #1		
PROJECT ADDRESS:	LEE COUNTY, FLORIDA		
PROJECT USE:	WAREHOUSE/OFFICE		
OWNER/CONTACT PERSON:	JASON P. TRAMONTE PHONE: 336-548-0897		
ZONING:			
<b>APPLICABLE CODES</b>			
BUILDING CODE:	FLORIDA BUILDING CODE, 2001 ED., GROUP S; (STORAGE OCCUPANCY)		
Mechanical & Plumbing Code:	FLORIDA BUILDING CODE, 2001 ED. - PLUMBING, MECHANICAL & FUEL GAS		
Electrical Code:	NEC, 1999 ED.		
Fire Code:	FLORIDA FIRE PREVENTION CODE, 2001 ED. (NEW STORAGE OCCUPANCY)		
Accessibility Code:	FLORIDA BUILDING CODE, 2001 ED.		
<b>STRUCTURAL FORCES</b>			
(SECTION 1603 & 1604)			
FLOOR DESIGN LIVE LOAD:	N/A	p.s.f.	
DEAD LOAD:	N/A	p.s.f.	
ROOF DESIGN LIVE LOAD:	20	p.s.f.	
DEAD LOAD:	20	p.s.f.	
<b>WIND DESIGN</b>			
BUILDING CATEGORY:	II		
BASIC WIND SPEED:	130	m.p.h. (3 SECOND GUST)	
IMPORTANCE FACTOR:	1.0	(TABLE 1609)	
INTERNAL PRESSURE COEFFICIENT, C <sub>pi</sub> :	+/- 0.18		
COMPONENT & CLADDING SEE SHEET A-2 & 3			
<b>GENERAL BUILDING LIMITATION (TABLE 500)</b>			
FLOOR AREA:	ALLOWED 45,000 S.F.	PROPOSED 24,000 S.F.	
HEIGHT OF BUILDING ALLOWED:	30	PROPOSED 3	
NO. OF STORIES:	ALLOWED 3	PROPOSED 3	
CONSTRUCTION TYPE:	TYPE IV, UNPROTECTED SPRINKLER		
AREA TABULATION:	24,000 S.F., 2,348 S.F. OFFICE, LESS THAN 25% OF TOTAL AREA. NO FIRE SEPARATION REQUIRED.		
<b>FIRE PROTECTION PER TABLE 600</b>			
COMPONENT	REQ'D. RATING	PROP. RATING	DESIGN NO.
PARTY WALLS:	N/A	N/A	N/A
INT. BEARING WALLS:	N/A	N/A	N/A
INT. NON-BEARING WALLS:	0	N/A	N/A
COLUMNS (SUPPORT ROOF ONLY):	N/A	N/A	N/A
BEAMS, GIRDERS & TRUSS:	N/A	N/A	N/A
ROOF CEILING:	N/A	N/A	N/A
WALLS BETWEEN TENANTS:	1HR.	1HR.	N/A
EXT. BEARING WALLS:	NORTH WALL FROM LINE ADJUTS 100'-0" BALUARD RIGHT OF WAY N/C/N/A ALLOWED/PROPOSED. ALL OTHERS WALLS ARE GREATER THAN 30'-0" FROM PROP. LINE N/C(N/A) ALLOWED/PROPOSED.		
EXT. NON-BEARING WALL:	N/A	N/A	N/A
<b>FIRE RESISTANT PARTITIONS PER TABLE 705.1.2</b>			
OCCUPANCY SEPARATIONS:	REQ'D.	DES. NO.	APPROX. PROTECT
EXIT ACCESS CORRIDOR:	N/A	N/A	N/A
SHAFT ENCLOSURE:	N/A	N/A	N/A
<b>INTERIOR FINISH CLASSIFICATION (FLORIDA BUILDING CODE, 2001)</b>			
CEILING:	C		
WALLS:	A, B OR C		
FLOOR:	A, B OR C		
<b>INTERIOR FINISH CLASSIFICATION (FL. FIRE PREVENTION CODE, 2001)</b>			
CEILING:	A, B OR C		
WALLS:	A, B OR C		
FLOOR:	A, B OR C		
<b>MAX. TRAVEL</b>			
MAX. TRAVEL:	200 FT.	PROPOSED	200 FT.
MAX. DEAD END CORR.:	20 FT.	PROPOSED	20 FT.
MIN. CORR. WIDTH:	44 IN.	PROPOSED	44 IN.
MIN. OPENING WIDTH:	32 IN.	PROPOSED	32 IN.



- KEYNOTES:**
- INSTALL 3/16" THICK UNFRAISED DEBRIS IMPACT RESISTANT TINTED GLASS ALUMINUM DOOR AND FRAME UNFRAMED 1" BELOW TOP. AUTO CLOSER ALUMINUM THRESHOLD 4" HIGHER. STANDARD HARDWARE. CERTIFIED FOR 50 MPH WIND SPEED. REFER TO INSTALLATION DETAIL BY SUPPLIER. CALK WATERIGHT BEFORE STUCCO INSTALLATION & CALK AGAIN WATERIGHT AFTER STUCCO INSTALLATION. ATTACH FRAME TO MASONRY BY 3/8" DIA. x 3-1/2" TAPCONS @ 16" ON CENTER. 4" O.C. & ENDS 4" O.C. IN FIELD. UNLESS OTHERWISE NOTED BY STRUCTURAL MANUFACTURING ENGINEER. PROVIDE CONC. LITTLE OVER OPENING.
  - INSTALL 3/16" THICK UNFRAISED DEBRIS IMPACT RESISTANT TINTED GLASS ALUMINUM DOOR AND FRAME. AUTO CLOSER ALUMINUM THRESHOLD 4" HIGHER. STANDARD HARDWARE. CERTIFIED FOR 50 MPH WIND SPEED. REFER TO INSTALLATION DETAIL BY SUPPLIER. CALK WATERIGHT BEFORE STUCCO INSTALLATION & CALK AGAIN WATERIGHT AFTER STUCCO INSTALLATION. ATTACH FRAME TO MASONRY BY 3/8" DIA. x 3-1/2" TAPCONS @ 16" ON CENTER. 4" O.C. & ENDS 4" O.C. IN FIELD. UNLESS OTHERWISE NOTED BY STRUCTURAL MANUFACTURING ENGINEER. PROVIDE CONC. LITTLE OVER OPENING.
  - INSTALL 3/8" HOLLOW CORE WOOD DOOR IN WOOD FRAME WITH STANDARD HARDWARE. PROVIDE LEVER HANDLE HARDWARE. PROVIDE CLOSURE ON HIG. DOORS & DOORS FROM OFFICE TO WAREHOUSE & FROM GENERAL OFFICE TO GILL GALL. 4" WAREHOUSE.
  - INSTALL 3/16" HOLLOW CORE WOOD DOOR IN WOOD FRAME WITH STANDARD HARDWARE. PROVIDE LEVER HANDLE HARDWARE. PROVIDE CLOSURE ON HIG. DOORS & DOORS FROM OFFICE TO WAREHOUSE & FROM GENERAL OFFICE TO GILL GALL. 4" WAREHOUSE.
  - INSTALL 1/2" x 1/4" CHAIN HOIST OVERHEAD STEEL COLLING DOOR WITH ASSOCIATED HARDWARE AND METAL TRACK. CERTIFIED FOR 50 MPH WIND LOAD - REFER TO INSTALLATION DETAIL BY SUPPLIER.
  - INSTALL 1/2" x 1/4" CHAIN HOIST OVERHEAD STEEL COLLING DOOR WITH ASSOCIATED HARDWARE AND METAL TRACK. CERTIFIED FOR 50 MPH WIND LOAD - REFER TO INSTALLATION DETAIL BY SUPPLIER.
  - INSTALL 6'-0" x 6'-0" ALUMINUM STOREFRONT UNFRAISED DEBRIS IMPACT RESISTANT TINTED GLASS ALUMINUM FRAME CERTIFIED FOR 50 MPH WIND SPEED. REFER TO INSTALLATION DETAIL BY SUPPLIER. CALK WATERIGHT BEFORE STUCCO INSTALLATION & CALK AGAIN WATERIGHT AFTER STUCCO INSTALLATION. ATTACH FRAME TO MASONRY BY 3/8" DIA. x 3-1/2" TAPCONS @ 16" ON CENTER. 4" O.C. & ENDS 4" O.C. IN FIELD UNLESS OTHERWISE SPECIFIED BY ALUMINUM UNDOOR MANUFACTURING ENGINEER.
  - 4'-0" x 4'-0" TINTED GLASS WINDOW IN WOOD FRAME, MATCH HEIGHT OF DOOR.
  - INSTALL 1/4" DIAMETER HANDICAP ACCESSIBLE GRAB BAR, 36" BEHIND TOILET AND 48" TO SIDE, MOUNTED 4" 33" AFF.
  - INSTALL WALL LENS HANDICAP ACCESSIBLE LAVATORY WITH SOAP HOLDER AND 18" x 24" HERRER.
  - INSTALL HANDICAP ACCESSIBLE TOILET (65 GALLON WATER SAVER) TOILET TO 60" HIGHER.
  - STEEL COLUMNS - REFER TO METAL BUILDING SHOP DRAWINGS.
  - TENANT TO SUPPLY BOTTLED WATER.
  - INDICATES LINE OF OVERHAIRS - REFER TO SECTION.
  - 1/2" GYP. BOARD ON 1/2" FURRING @ 16" O.C. WITH 4" BATT INSULATION.
  - INTERIOR GYP. WALL CONSTRUCTION
  - 1/2" PAINTED DETAIL, EACH SIDE OF 3-1/2" OR 6" METAL STUD @ 16" O.C. WITH CONTINUOUS TOP AND BOTTOM CHANNELS (BOTH SIDES) @ 3" O.C. (MAX.) VENT. BASE TYPICAL. R-8 BATT INSULATION ON OUTSIDE WALLS.
  - DOOR CEILING CONSTRUCTION
  - OWNER SELECT 2 1/2" LAY-IN CEILING TILE IN QUINER SELECT COLOR METAL GRID SYSTEM. R-8 BATT INSULATION THROUGHOUT.
  - STEEL ENDWALL COLUMNS - REFER TO METAL BUILDING SHOP DRAWINGS.
  - ROOF STEEL FRAME LNS - REFER TO METAL BUILDING SHOP DRAWINGS.
  - METAL DOOR (FRONT AND CONCRETE SPLASH BLOCK LOCATION.
  - PROVIDE CROSS BRACING OR PORTAL FRAMING AS REQUIRED.
  - PROVIDE FIRE EXTINGUISHERS AS SHOWN AND DIRECTED BY FIRE MARSHALL.
  - PROVIDE (2) 1/2" RUBBER EXPANSION WHEEL ANGLE BRACKETS @ 14" 8" DIA. ANCHORS @ EACH.
  - 6" x 6" PAD'G LOCATION - REFER TO SHEET 6-11 FOR DETAILS.
  - 3'-6" HIGH STEEL RAILING - REFER TO SHEET 4-4 FOR DETAILS.
  - 1/2" GYP. BOARD ON ONE SIDE ONLY TO ROOF DECK.

**SHEET INDEX**

- A-1 FLOOR PLAN & NOTES
- A-2 EXT. ELEVATIONS & NOTES
- A-3 WALL SECTIONS & NOTES
- S-1 FOUNDATION PLAN & DETAILS
- FP-1 PLUMBING PLAN & FIRE PROTECTION PLAN, DETAILS & NOTES
- M-1 HVAC PLAN, DETAILS & NOTES
- E-1 LIGHTING PLAN
- E-2 POWER & SYSTEM PLAN
- E-3 SCHEDULES, RISERS, SPECIFICATIONS & NOTES

**NOTES TO PLANS EXAMINER**

THIS PROJECT IS A 24000 SQUARE FOOT TYPE IV UNPROTECTED, SPRINKLED, SINGLE STORY, STORAGE OCCUPANCY. THERE WILL BE NO HIGH PILED COMBUSTIBLE STOCK. THIS PROJECT IS FULLY ACCESSIBLE TO PHYSICALLY HANDICAPPED.

THIS PROJECT HAS BEEN DESIGNED IN ACCORDANCE WITH THE LEE COUNTY BUILDING CODE, CHAPTER 6, ARTICLE 14 SECTION 6-414.

THIS PROJECT HAS BEEN DESIGNED IN ACCORDANCE WITH THE FLORIDA BUILDING CODE 2001 FOR THE TYPE IV UNPROTECTED, SPRINKLED, SINGLE STORY, STORAGE OCCUPANCY. THIS PROJECT IS FULLY ACCESSIBLE TO PHYSICALLY HANDICAPPED.

JASON P. TRAMONTE LIC. NO. AN0003493

PROJ. NO.	
DRAWN	B.D.J.
DATE	2/7/03
CHECKED	J.P.T.
REVISIONS	
DATE	BY

A NEW BUILDING FOR  
BAYSHORE INDUSTRIAL CAMPUS  
WILSON ART LAMINATE DIVISION  
PHASE 4  
LEE COUNTY, FLORIDA

JASON P. TRAMONTE  
ARCHITECT

4524 S.E. 16TH PLACE  
CAPE CORAL, FLORIDA 33904  
(239) 549-0997  
AA 0002443