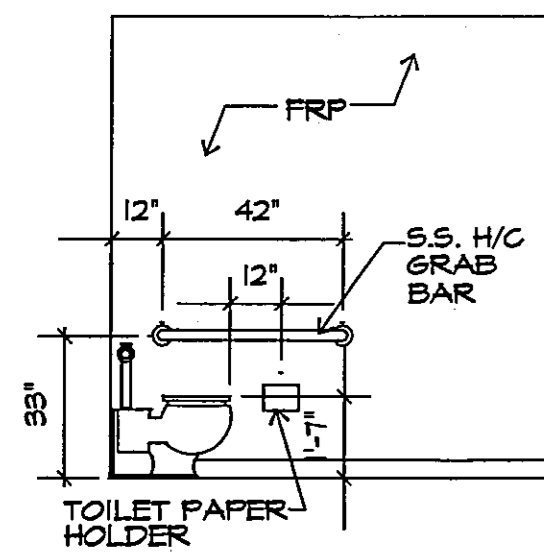
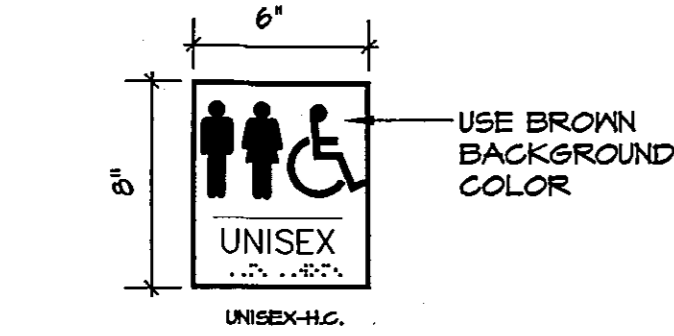


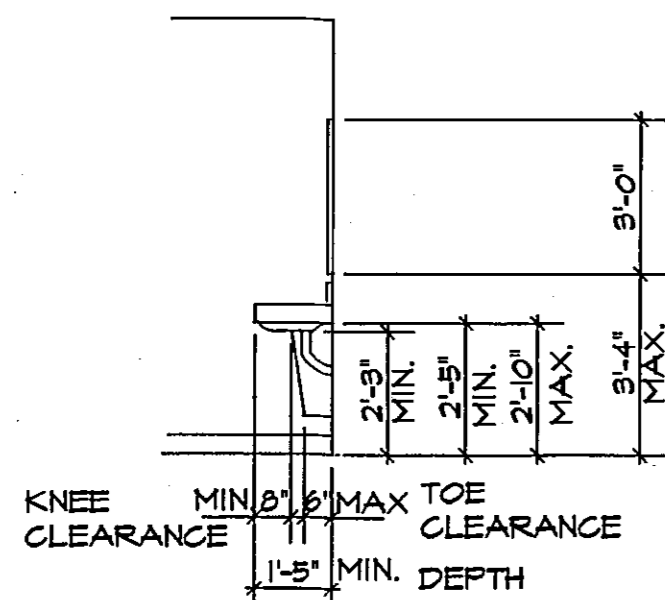
TOILET ELEV.
SCALE: N.T.S.



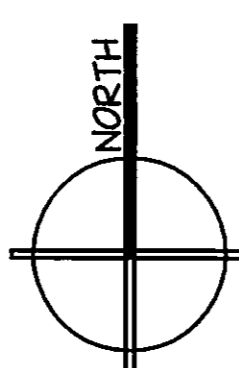
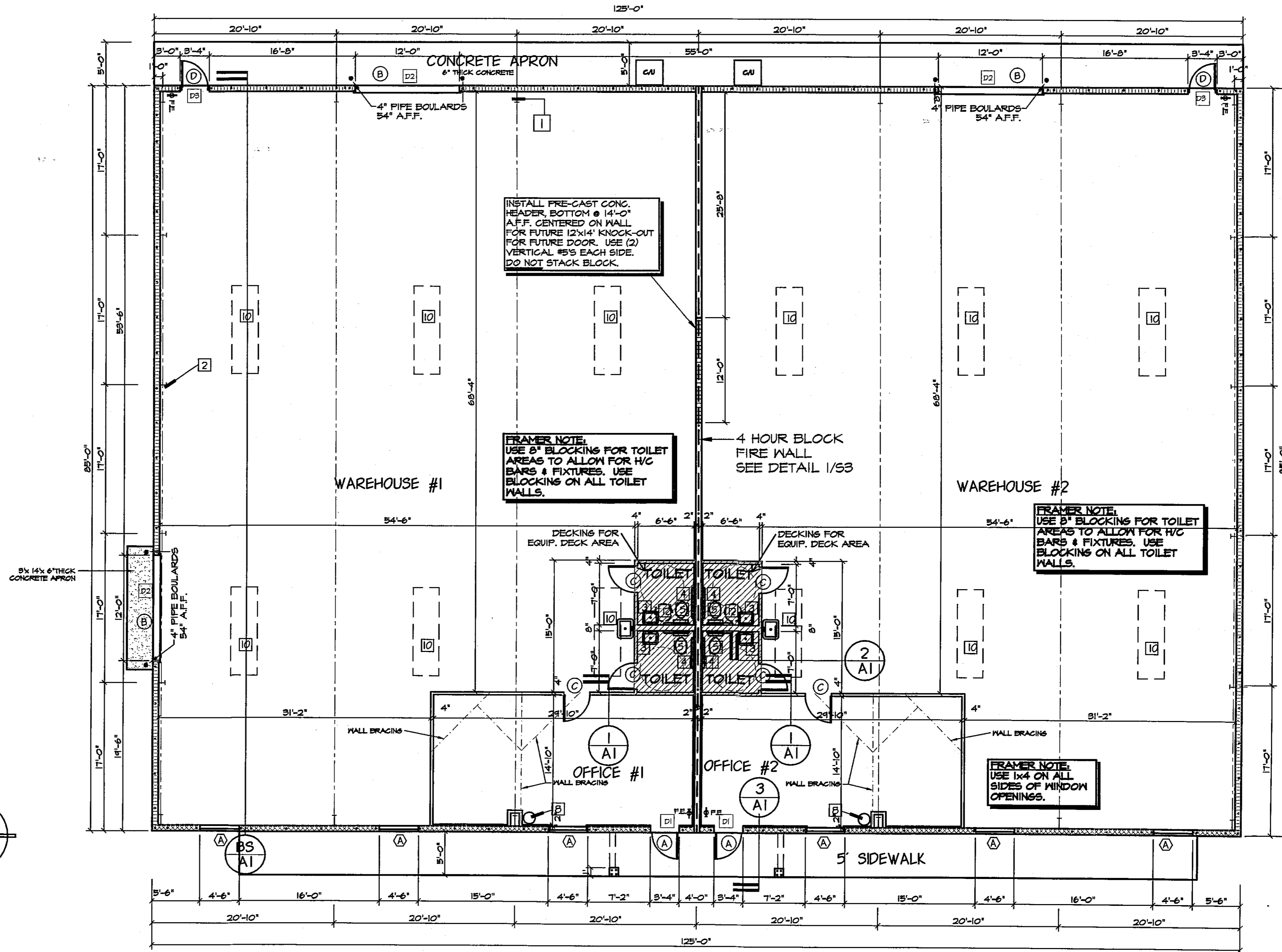
TOILET ELEV.
SCALE: N.T.S.



TOILET RM SIGNAGE
SCALE: N.T.S.



LAVATORY ELEV.
SCALE: N.T.S.



KEY NOTES:

- 1 RIGID STEEL FRAME - REFER TO SHOP DRAWINGS.
- 2 STEEL ENDWALL COLUMN - REFER TO SHOP DRAWINGS.
- 3 HANDICAP ACCESSIBLE LAVATORY.
- 4 HANDICAP GRAB BAR.
- 5 HANDICAP ACCESSIBLE TOILET.
- 6 SERVICE SINK
- 7 NOT USED
- 8 BOTTLED WATER DISPENSER BY OWNER.
- 9 10'-0" STEEL MONOVENT W/SCREEN.
- 10 3'x10' TRANSLUCENT SKYLIGHT.
- 11 4" FRAME OUT AT METAL BUILDING STRUCTURE AS REQUIRED.
- 12 INSTALL 40 GAL. WATER HEATER ON MECHANICAL DECK. DRAIN TO EXTERIOR

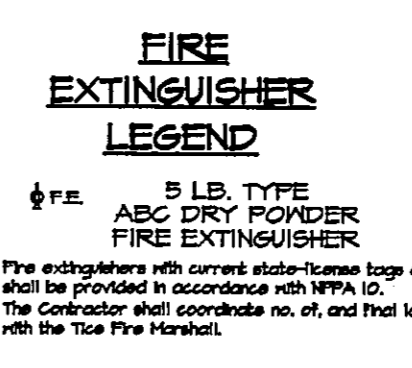
DOORS:

- (A) 3070 GLASS STORE FRONT DOOR, ESP WHITE METAL FRAME, IMPACT RESISTANT, TINTED GLASS, W/AUTO CLOSER.
- (B) 12'x14' O.H. STEEL COILING DOOR W/METAL TRACK.
- (C) 3068 S.C. WOOD DOOR IN WOOD JAMB, WITH WEATHER STRIPPING.
- (D) 3070 STEEL PERSONEL DOOR IN METAL JAMB.

WINDOWS:

- (A) HARCAR OR EQUAL SL-34 ORIEL SERIES 3000 ALUMINUM WINDOW W/MUTTINS W/TINTED IMPACT RESISTANT GLASS IN ESP WHITE FRAME.

PRODUCT SCHEDULE									
MARK	CALL SIZE	SIZE (WxH)	DETAIL	ZONE	DESIGN	WINDON / DOOR	INSTALLATION	WIND- BORNE	IMPACT COVERING
			H J S	(1602 1)	(1602 2)	PRODUCT APPROVAL	NOTES	DEBRIS	PRODUCT APPROVAL
						DESIGNATION / ENTITY	(LIST BELOW)	PROTECTION	DESIGNATION / ENTITY
								(WHERE APPLICABLE)	(WHERE APPLICABLE)
DOOR SCHEDULE									
D1	3070	3'-0" X 7'-0"	SEE 2/5-1	4	34 / -34	Y.K.K.	2	Y	02-0221.01
D2	120140	12'-0" X 14'-0"	SEE 3/5-1	4	34 / -36	OVERHEAD DOOR CO.	3	Y	FL142
D3	3070	3'-0" X 7'-0"	SEE 2/5-1	4	34 / -34	THERM-TRU STEEL (OUTSWINS)		N/A	RES-HST00485
WINDOW SCHEDULE									
(A)	34 SL	54" X 51"	SEE 1/5-1	4	34 / -34	PST	2	Y	02-0491.9
ROOF COVERING MATERIAL									
TYPE		MANUFACTURER		APPROVED MODEL, STYLE OR DESIGNATION					
METAL ROOFING		DEAN BUILDINGS		METAL BUILDING SPEC					
CODE COMPLIANCE:									
<ul style="list-style-type: none"> • ASPHALT SHINGLES SHALL BE IN COMPLIANCE W/ FCC 2001, SEC. 1507.3 • CLAY AND CONCRETE TILES SHALL BE IN COMPLIANCE W/ FCC 2001, SEC. 1507.4 • METAL ROOFING SHALL BE IN COMPLIANCE W/ FCC 2001, SEC. 1507.5 									
IMPACT RESISTANT COVERING MATERIAL									
TYPE		MANUFACTURER		APPROVED MODEL, STYLE OR DESIGNATION					
GLAZING		Y.K.K. & PST		02-0221.01 & 02-0491.9					
INSTALLATION NOTES									
<ul style="list-style-type: none"> 1. MEANS OF EGRESS 2. TEMPERED WINDOW 3. O.H. GARAGE DOOR 									
LEGEND									
<ul style="list-style-type: none"> Dx = DOOR DESIGNATION SLx = SKYLITE DESIGNATION Wx = WINDOW DESIGNATION 									
SITE DESIGNATIONS									
<ul style="list-style-type: none"> W = WIDTH H = HEIGHT 									



WALL LEGEND:

- 8" CONCRETE BLK. WALL W/METAL SIDING ABOVE.
- METAL SIDING ABOVE 4'-0" HIGH MASONRY SKIRT WALL.
- 4" or 6" FRAME WALL W/ R-II BATT INSULATION @ PERIMETER.
- 8" CONCRETE BLK. 2 HR FIRE WALL. REFER TO DETAIL 1/53

NOTES TO PLANS EXAMINER:

- THIS PROJECT IS A 10,625 SQ. FT., TYPE IV, UNPROTECTED, UNSPRINKLERED, LOW HAZARD, OFFICE / WAREHOUSE, TWO UNIT, SINGLE STORY
- PROJECT IS DIVIDED INTO 2 UNITS. 5,312.5 S.F. EACH WITH 450 SF OFFICE AND 4,862.5 S.F. OF WAREHOUSE.
- THERE WILL BE NO HIGH PILED COMBUSTIBLE STOCK.
- THIS PROJECT IS FULLY ACCESSIBLE TO THE PHYSICALLY HANDICAPPED.

Reviewed by: RAO

Sox Development, Inc.
14565 Eagle Ridge Drive
Fort Myers, Florida 33912

Phase 2 Lot 2
Boyschore Industrial Park, North Fort Myers, FL
FLOOR PLAN

A3

SCALE: 1/8" = 1'-0"
DATE: MARCH 24, 2005
SHEET

J.R. & Associates, Inc.
Real Estate Professional-Engineers-Builders-Property Managers
301 Northwest 20th Court
Cape Coral, FL 33909
Cell Phone: (239) 340-8571

J.R. & Associates, Inc.
1184 Lakeside Blvd. #200
Fort Myers, FL 33905
Phone: (239) 340-8571
Fax: (239) 340-8572

APPROVED
John F. Kligoff
Florida P.E. #52884
Seal with Engineer Seal